

Lens Selector Software

User Manual

UD.6L0202D1300A01

Thank you for purchasing our product. This manual applies to Lens Selector software, please read it carefully for the better use of this software. The contents in this manual are subject to change without notice.

Contents

Chapter 1 Introduction	3
1.1 Overview.....	3
1.2 System Requirements	3
1.3 Conventions.....	3
1.4 Version Information.....	3
Chapter 2 Running Lens Selector	4
Chapter 3 Operating Lens Selector	5
3.1 Selecting Lens	5
3.2 Simulating the Monitoring Scene	5

Chapter 1 Introduction

1.1 Overview

The Lens Selector is a user-friendly and installation-free tool to help users to select a proper lens for his camera according on the actual demand. It offers an information database of both camera and lens to satisfy different requirements. And you can simulate the scene visually via adjusting the height of the camera, focal length and other parameters after you select a lens.

1.2 System Requirements

Operating System: Microsoft Windows 7 / Windows 2008 32 / 64-bit
Windows XP / Windows 2003 32-bit

CPU: Intel Pentium IV @ 3.0 GHz or above

RAM: 1G or above

Video Card: RADEON X700 Series

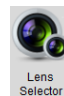
Display: 1024*768 resolution or above

1.3 Conventions

In order to simplify the description, we define the “Lens Selector” as “software” in the following chapters.

1.4 Version Information

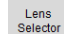


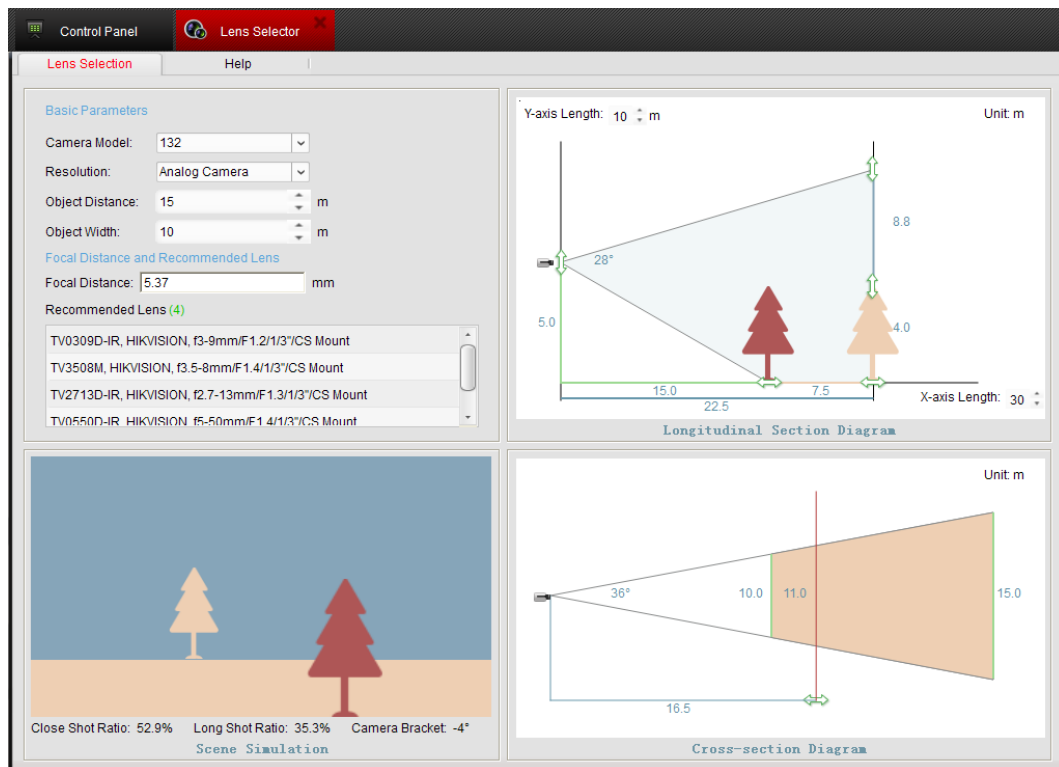
After installing the software, run the software and click  on the control panel to enter the Lens Selector interface.

Click the **Help > About** tab at the top to view the version information or click **Help > User Manual** to get the User Manual of the software.

Chapter 2 Running Lens Selector



Run the software as the administrator, and click  on the control panel to enter the Lens Selector main interface.



Note: You must run the software as administrator. When you log in the operating system as an administrator, you can run it directly and when you login as other operators, you need to right click on the application and choose run as administrator.

Chapter 3 Operating Lens Selector

3.1 Selecting Lens

Purpose:

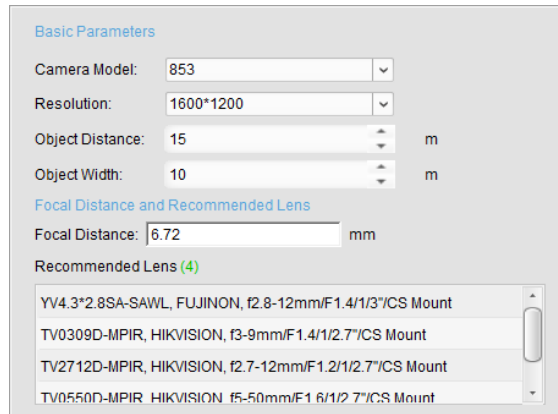
Complete the specified parameters and the software will recommend the applicable lens according to the given parameters.

Steps:

1. On the main interface, select the parameters of **Camera Model** and **Resolution** in the drop-down list.
2. Edit the parameters of **Object Distance** and **Object Width** according to the actual demand by clicking ▲ and ▼ or inputting content in the textbox directly.
3. The recommended lens will be listed in the **Recommended Lens** area.

Example:

Select the camera model as 853, and the resolution as 1600*1200. Adjust the object distance and width to 15m and 10m, and then the focal distance and recommended lens are displayed.



The screenshot displays the 'Basic Parameters' section of the software interface. It includes input fields for 'Camera Model' (set to 853), 'Resolution' (set to 1600*1200), 'Object Distance' (set to 15 m), and 'Object Width' (set to 10 m). Below this, the 'Focal Distance and Recommended Lens' section shows a 'Focal Distance' of 6.72 mm and a list of four recommended lenses. The lenses are: YV4.3*2.8SA-SAWL, FUJINON, f2.8-12mm/F1.4/1/3"/CS Mount; TV0309D-MPIR, HIKVISION, f3-9mm/F1.4/1/2.7"/CS Mount; TV2712D-MPIR, HIKVISION, f2.7-12mm/F1.2/1/2.7"/CS Mount; and TV0550D-MPIR, HIKVISION, f5-50mm/F1.6/1/2.7"/CS Mount.

Basic Parameters	
Camera Model:	853
Resolution:	1600*1200
Object Distance:	15 m
Object Width:	10 m

Focal Distance and Recommended Lens	
Focal Distance:	6.72 mm
Recommended Lens (4)	
YV4.3*2.8SA-SAWL, FUJINON, f2.8-12mm/F1.4/1/3"/CS Mount	
TV0309D-MPIR, HIKVISION, f3-9mm/F1.4/1/2.7"/CS Mount	
TV2712D-MPIR, HIKVISION, f2.7-12mm/F1.2/1/2.7"/CS Mount	
TV0550D-MPIR, HIKVISION, f5-50mm/F1.6/1/2.7"/CS Mount	

3.2 Simulating the Monitoring Scene

Purpose:

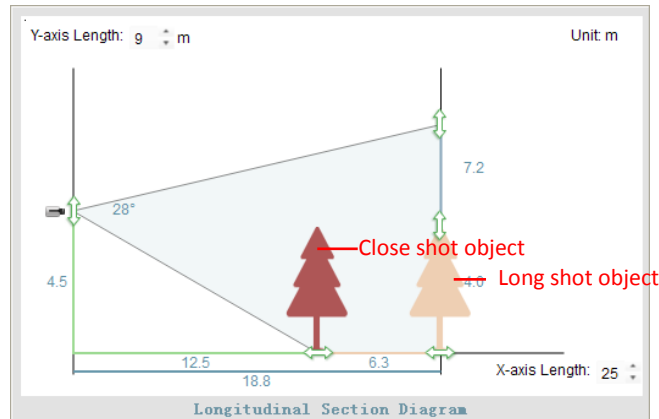
After the recommendation of the lens, the software simulates the monitor scene with displaying the value and section view of the view angle and focal length. Adjust the location of subject and camera to simulate the application scene and get the measurement of it. Then you can install and adjust the camera according the given information.

Notes:

1. When you adjust the object or parameters on the right side, the parameters on the left side will not change.

2. The **Scene Simulation** Interface will be synchronized with the adjustment.

● Longitudinal Section Diagram



Adjust the length of axis

Click the and to adjust the length of the axis on your demand.

Adjust the camera bracket

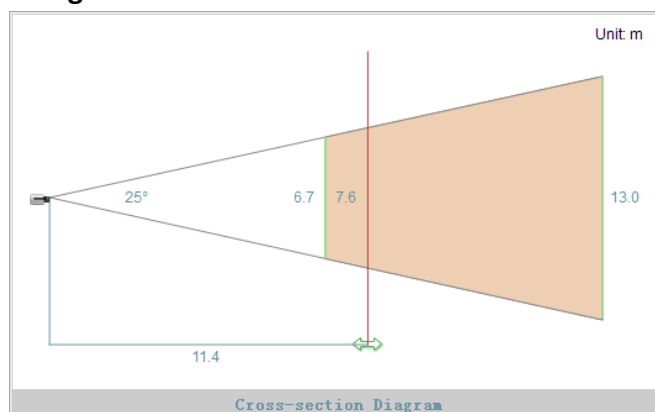
Drag the of the camera to the upside or downside to adjust the height of the camera. For the viewing angle and object distance are fixed, the camera tilt angle will be changed.

Adjust the object ratio in the image

Drag the of the corresponding object to the left or right to adjust the distance between object and lens, and then object ratio and the object width will be changed at the same time.

Drag the of the corresponding object to the upside or downside to adjust the height of the object.

● Cross-section Diagram



You can drag the to the left or right, and the number next to the red line displays the current view width.

0101001031203